

Foundation for Health Care Quality (FHCQ):

Mission: Support better health care decision-making, improve the quality and efficiency of health services delivery, and enhance the health status of the population.

Roles: The FHCQ will bring its status as an independent, not-for-profit 501c3 corporation and its experience in collaborating with a wide variety of stakeholders to bridge public & private concerns to its roles as host of the Coalition structures and activities; it will provide staffing and facilitation to the Coalition, support the teams with technical expertise, and serve as fiscal agent.

Washington Patient Safety Coalition (WPSC):

Mission: Improve safety for patients receiving health care in Washington, in all care settings.

Vision: Safe care: every patient, every time, everywhere.

Goals: Across care settings we will decrease error by achieving the following: facilitate the exchange of information about best practices relative to patient safety; disseminate new knowledge and new practices; support coordinated/collaborative efforts and new partnerships; raise awareness of the need for safe practices.

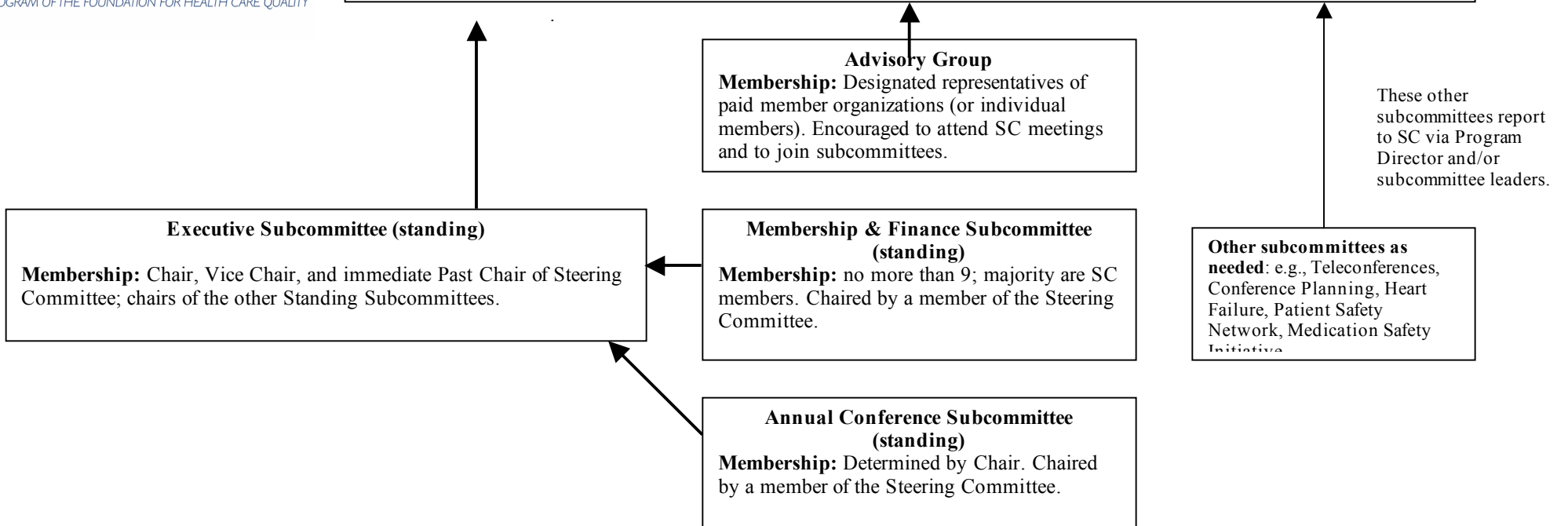
Values: Non-punitive methods; system-oriented and sustainable changes; evidence-based methods and activities; inclusive of all populations; resource-sensitive.

Steering Committee:

Mission: Provide leadership and strategic planning for the Coalition goals and activities.

Roles: Identify priorities; measure progress toward the Coalition’s goals; communicate with stakeholders and disseminate information and materials; and identify sources of financial support.

Membership: No more than 15, drawn from Coalition member organizations, to represent community stakeholders.



Executive Subcommittee (standing)

Membership: Chair, Vice Chair, and immediate Past Chair of Steering Committee; chairs of the other Standing Subcommittees.

Advisory Group

Membership: Designated representatives of paid member organizations (or individual members). Encouraged to attend SC meetings and to join subcommittees.

Membership & Finance Subcommittee (standing)

Membership: no more than 9; majority are SC members. Chaired by a member of the Steering Committee.

Annual Conference Subcommittee (standing)

Membership: Determined by Chair. Chaired by a member of the Steering Committee.

Other subcommittees as needed: e.g., Teleconferences, Conference Planning, Heart Failure, Patient Safety Network, Medication Safety Initiative

These other subcommittees report to SC via Program Director and/or subcommittee leaders.